

CITY OF DUBUQUE - OFFICE OF SUSTAINABILITY

DUBUQUE TREE VOUCHER PROGRAM



SUSTAINABLE
DUBUQUE
viable • livable • equitable



OUTLINE



Climate Action Plan



Importance of Trees



Voucher Process

**CLIMATE
ACTION**



WHAT IS CLIMATE ACTION?

- Steps we can take to help solve the climate crisis
- Helps residents and businesses build resiliency
- Strategies to reduce GHG emissions (mitigation) and adapt to changes already occurring (adaptation)

GREENSPACE AND TREE CANOPY

SECTION 10 OF CAP

- Benefits of greenspace and tree canopy
- Strategies to expand tree canopy, improve lawns, and mitigate the heat island effect

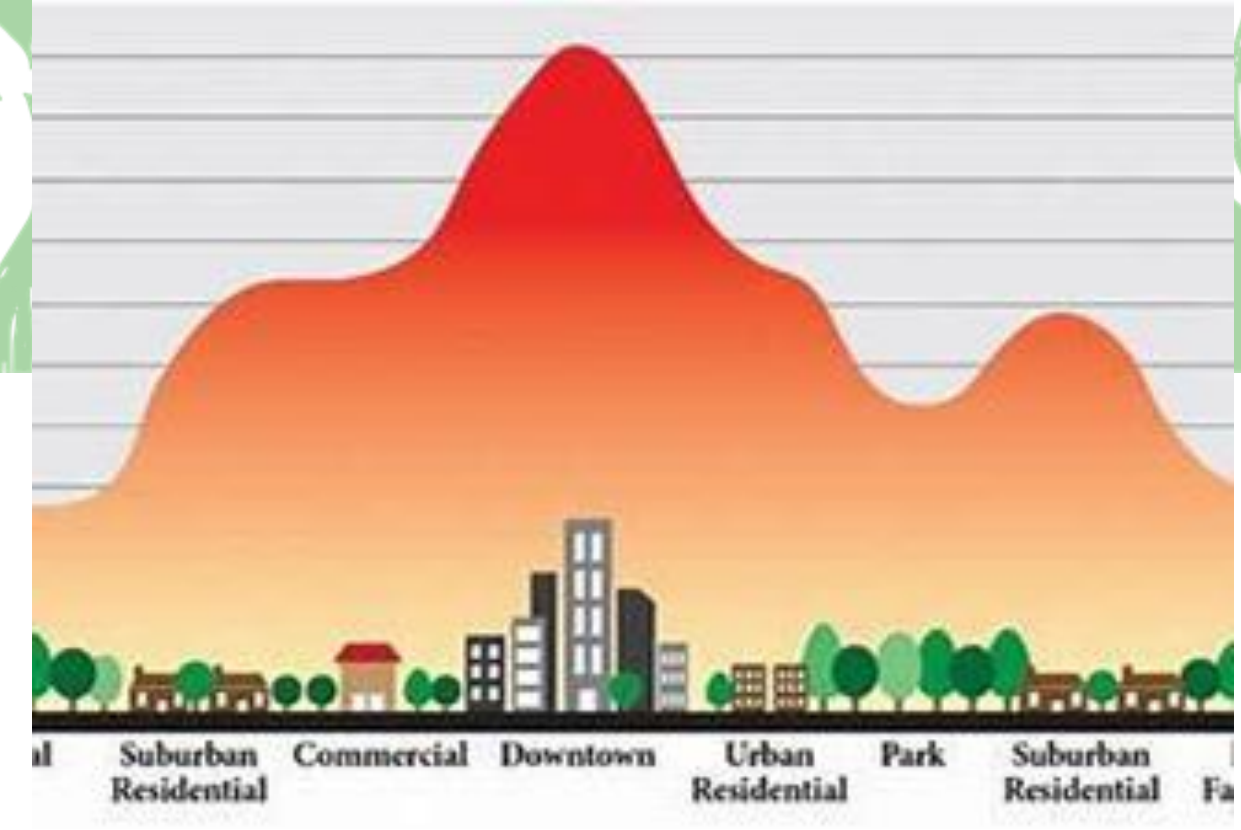




**STRENGTHEN
DBQ'S TREE
CANOPY**



**STRENGTHEN
DBQ'S GREEN
SPACE**

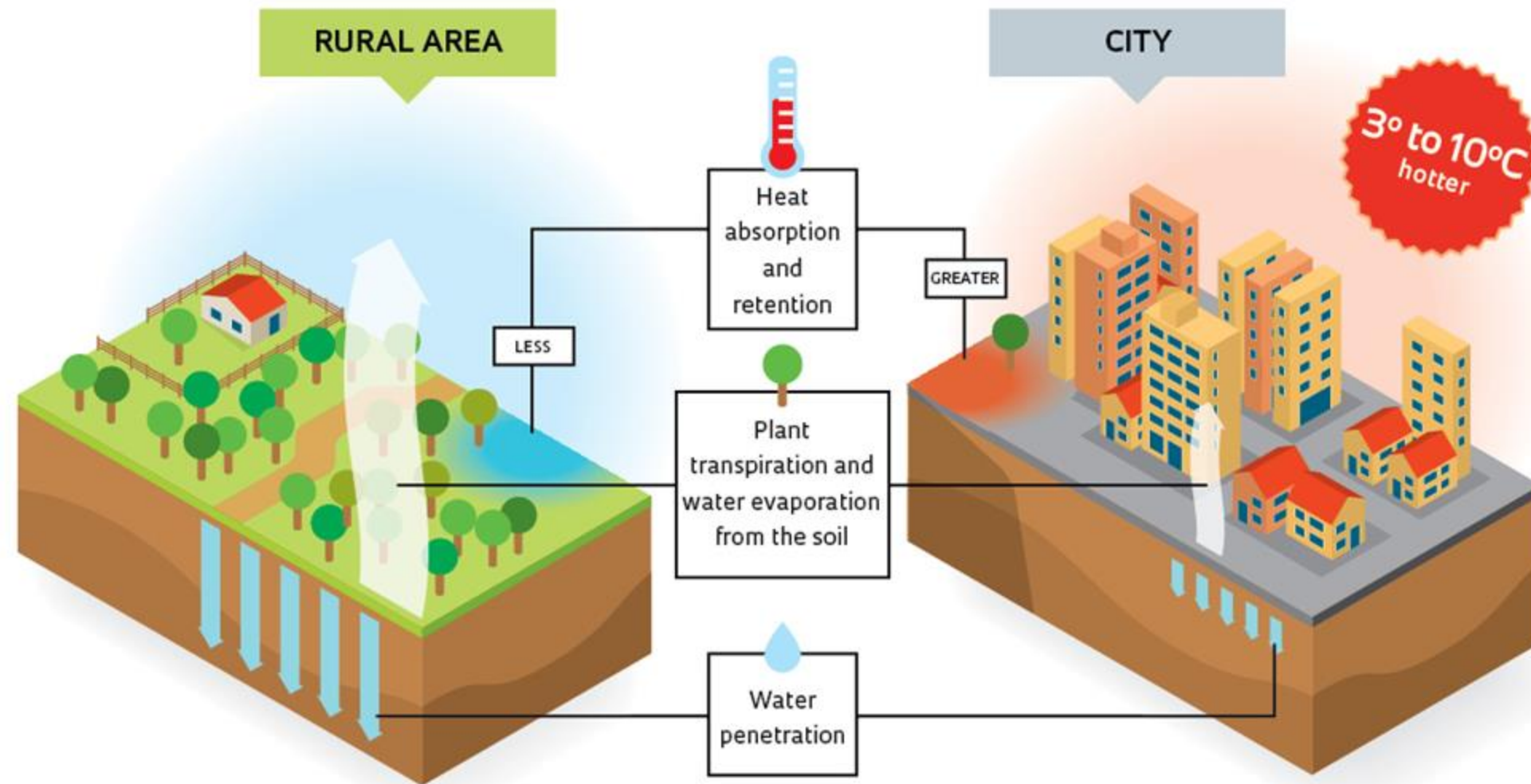


**MITIGATE
HEAT ISLAND
IMPACTS**

GREENSPACE AND TREE CANOPY CAP GOALS

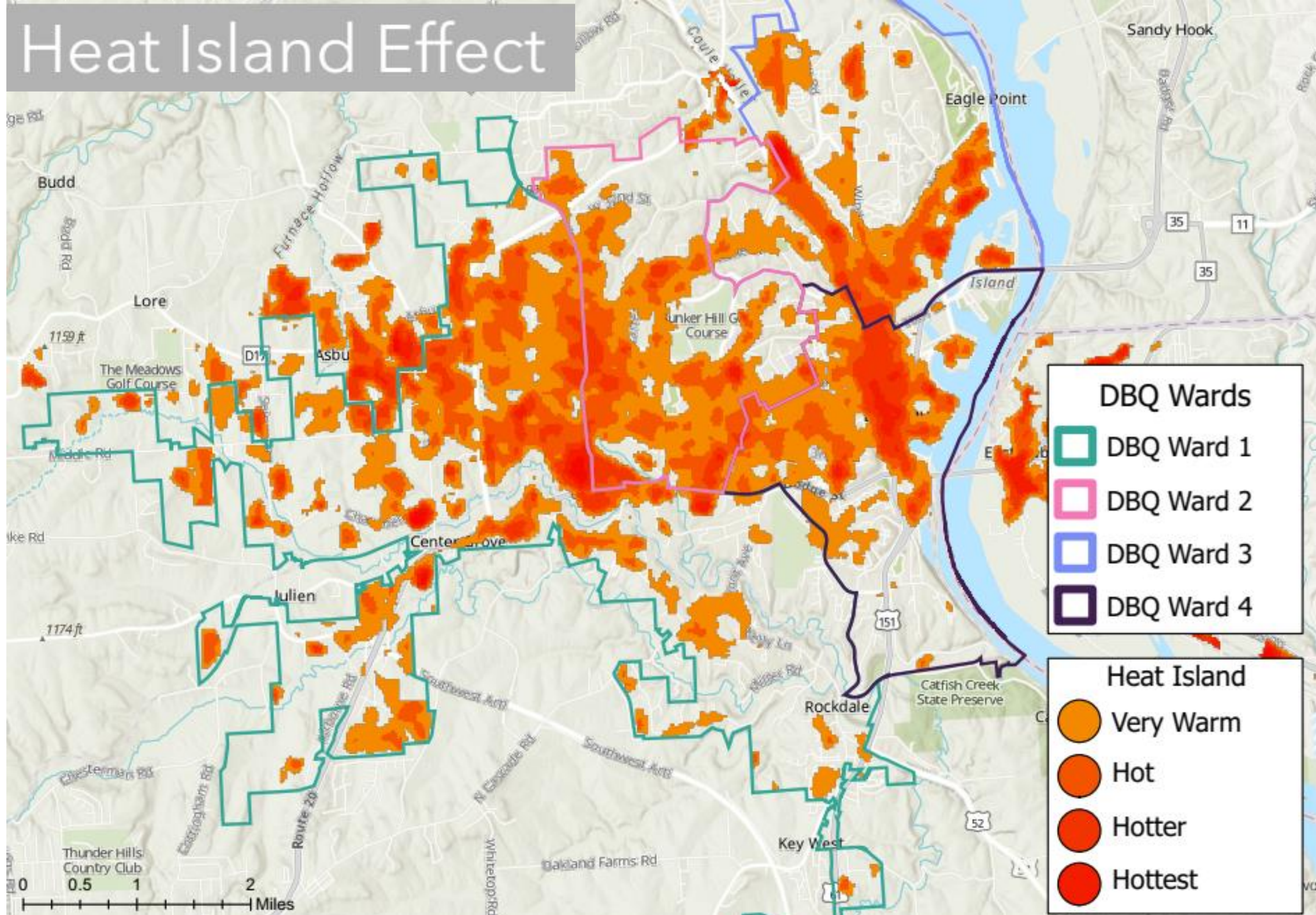
EQUITY CONSIDERATIONS

Why the urban heat island effect occurs



- Neighborhoods with higher concentrations of low income and BIPOC residents have lower tree canopy coverage
- Vulnerable neighborhoods have the highest heat island impacts
- Heat island: urban areas that are hotter than rural areas due to the built environment

Heat Island Effect



Did You Know?

Dubuque's **tree** canopy covers an estimated **26.2%** of the city's total land area. The city's **trees** and grasslands sequester a over **47,000,000** pounds of CO2 annually.

\$8,786,896

in environmental and energy savings are provided by the **trees** within the city annually.





THE IMPORTANCE AND BENEFITS OF AN URBAN TREE CANOPY

PLANET

ENVIRONMENTAL BENEFITS

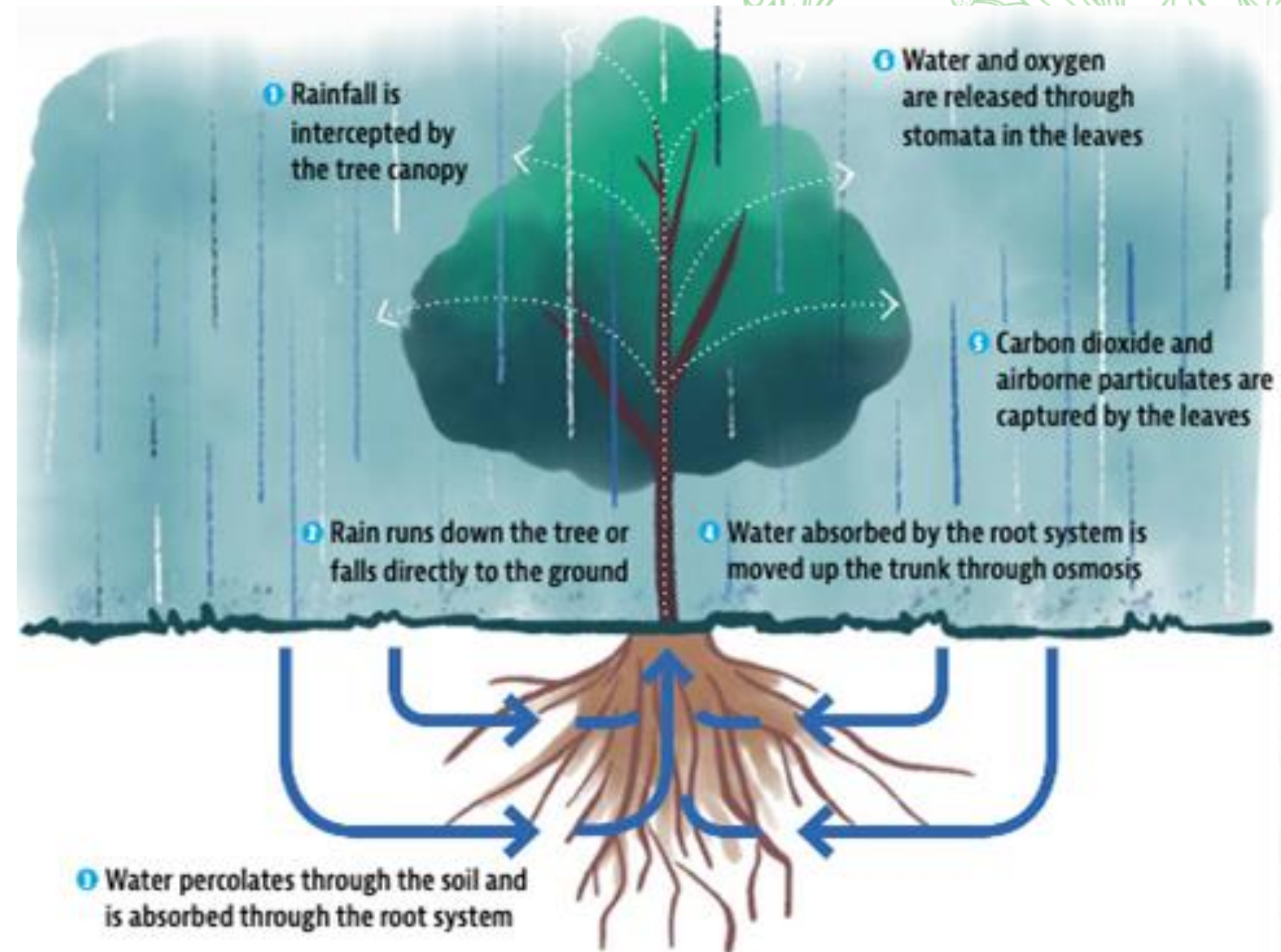
PEOPLE

SOCIAL BENEFITS

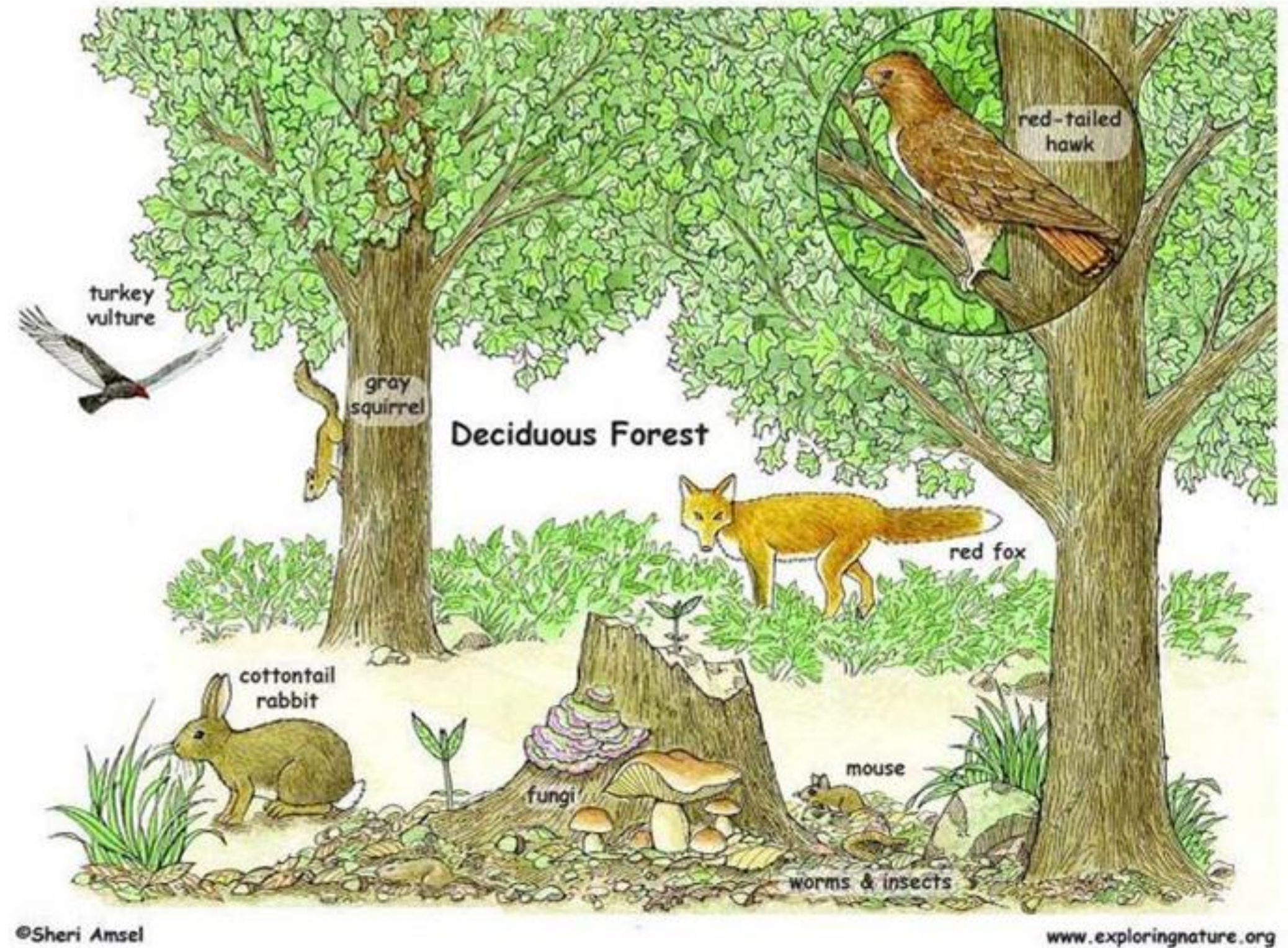
POCKETBOOK

ECONOMIC BENEFITS

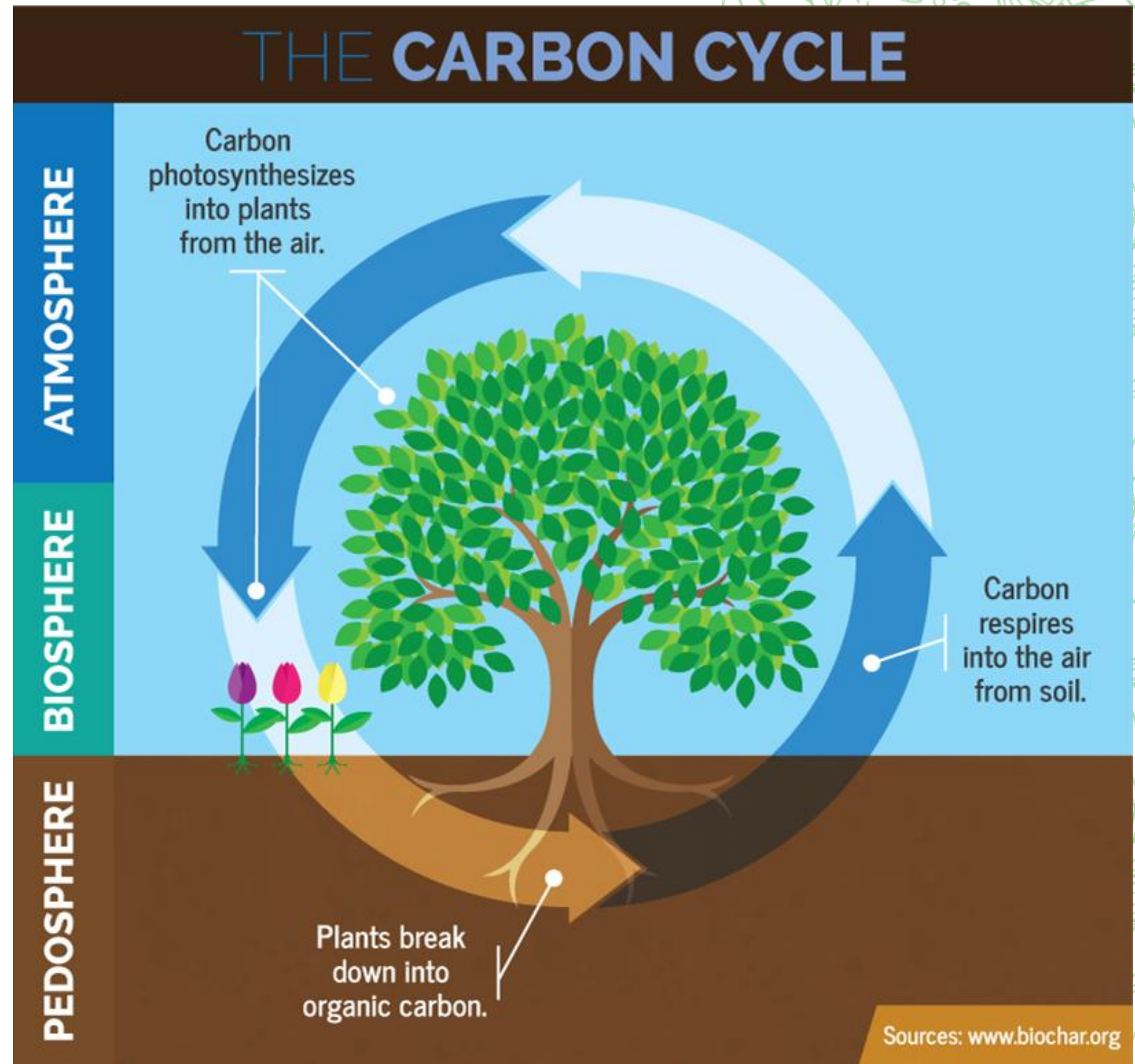
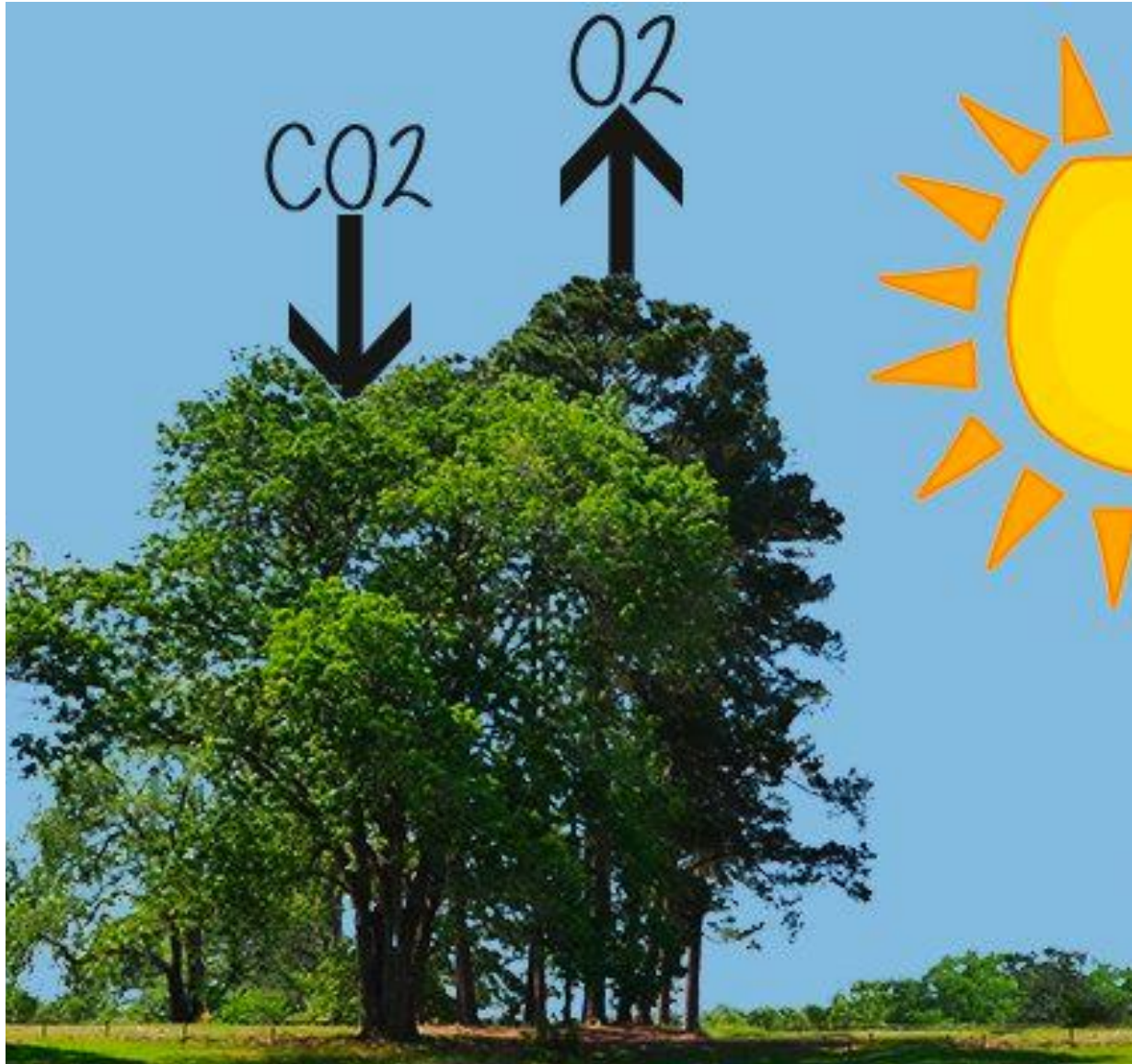
TREES CLEAN WATER, REDUCE FLOODING, & MANAGE STORMWATER



TREES PROVIDE HABITATS & SUSTAIN THE FOOD CHAIN



TREES FIGHT CLIMATE CHANGE



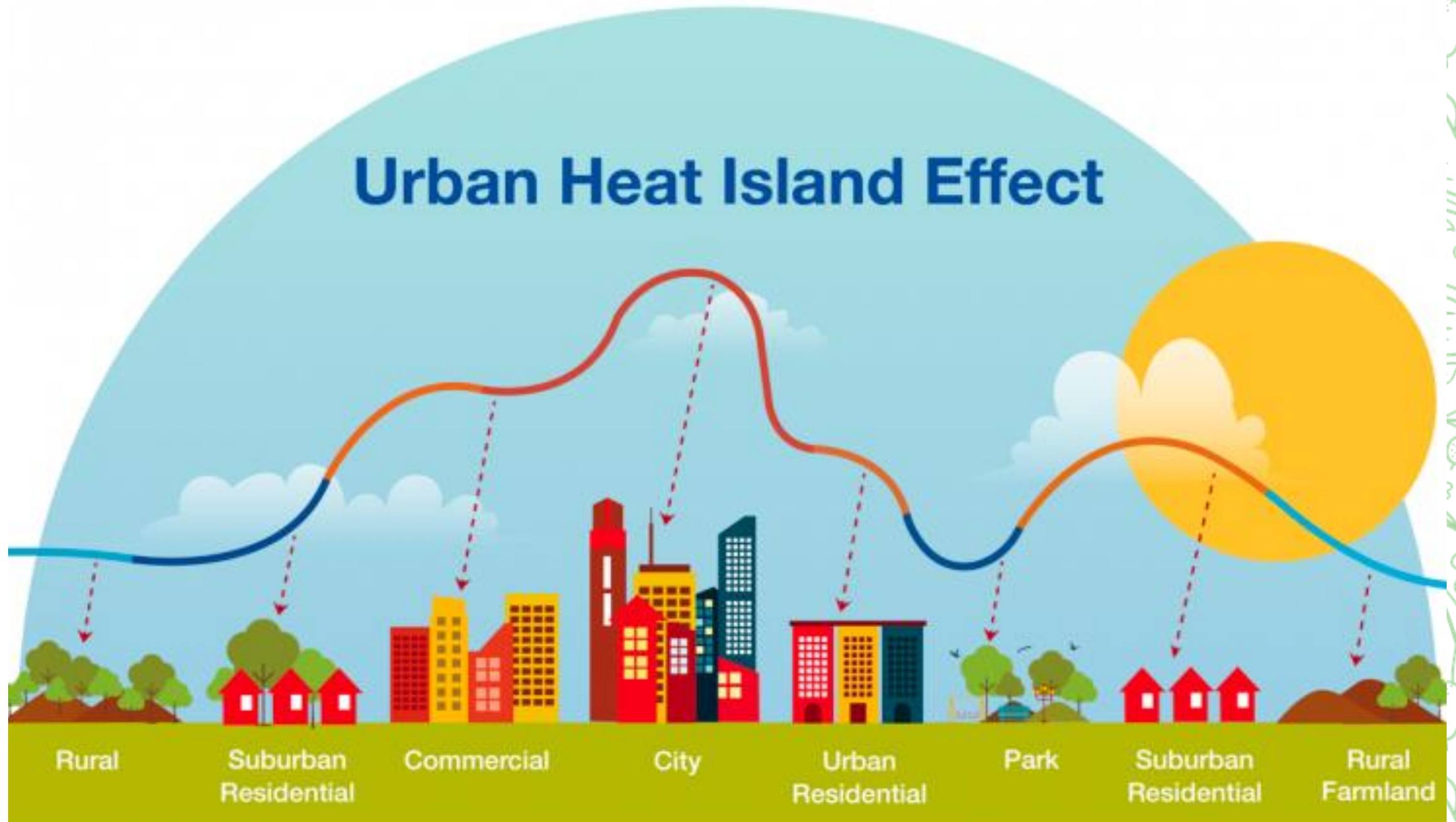
TREES IMPROVE AIR QUALITY

Particulate pollution



A 65 to 600 ft wide buffer may reduce particulate pollution by 40 to 75 percent although many factors will affect pollutant removal

TREES MITIGATE URBAN HEAT ISLANDS



TREES REDUCE CAR CRASHES & CRIME

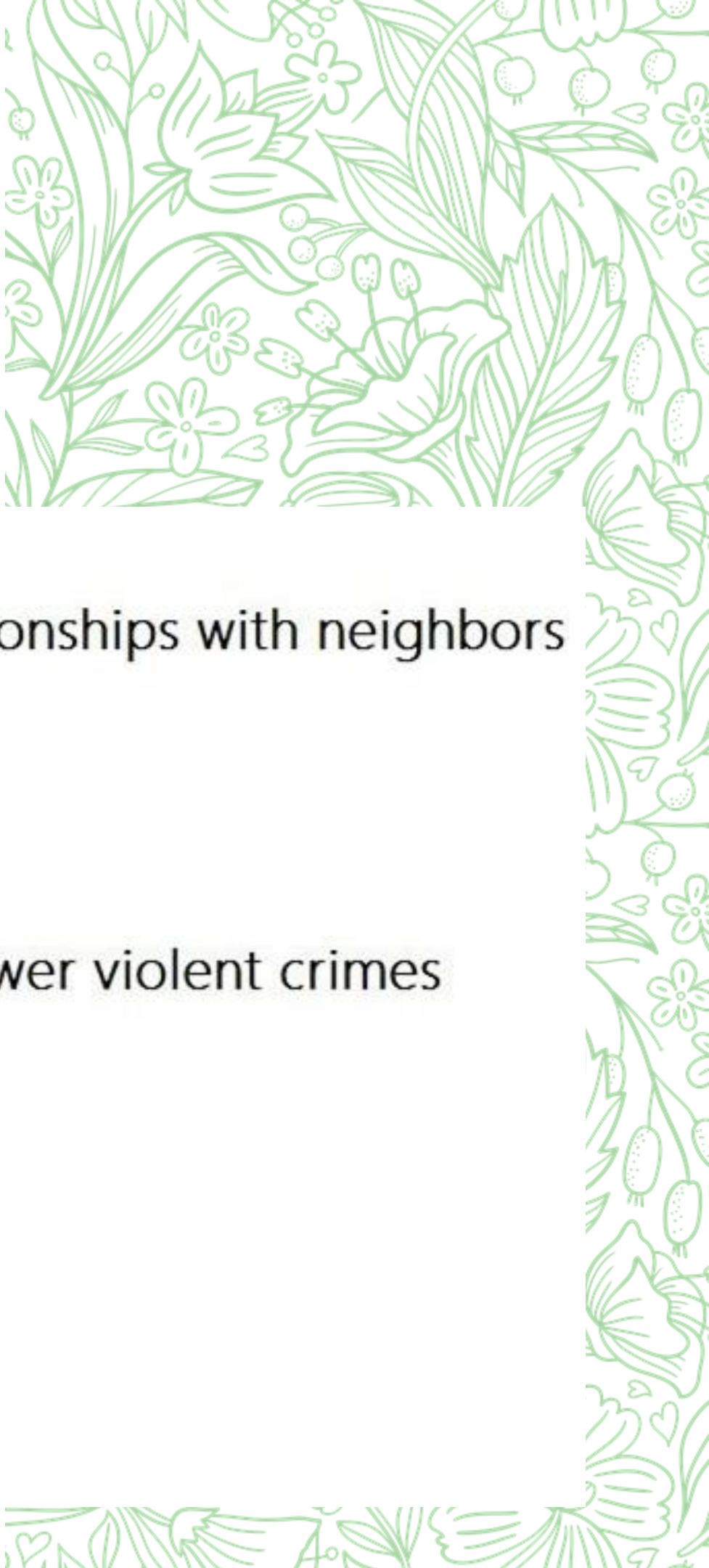
48 % fewer property crimes

better relationships with neighbors

feeling safer everyday

56 % fewer violent crimes

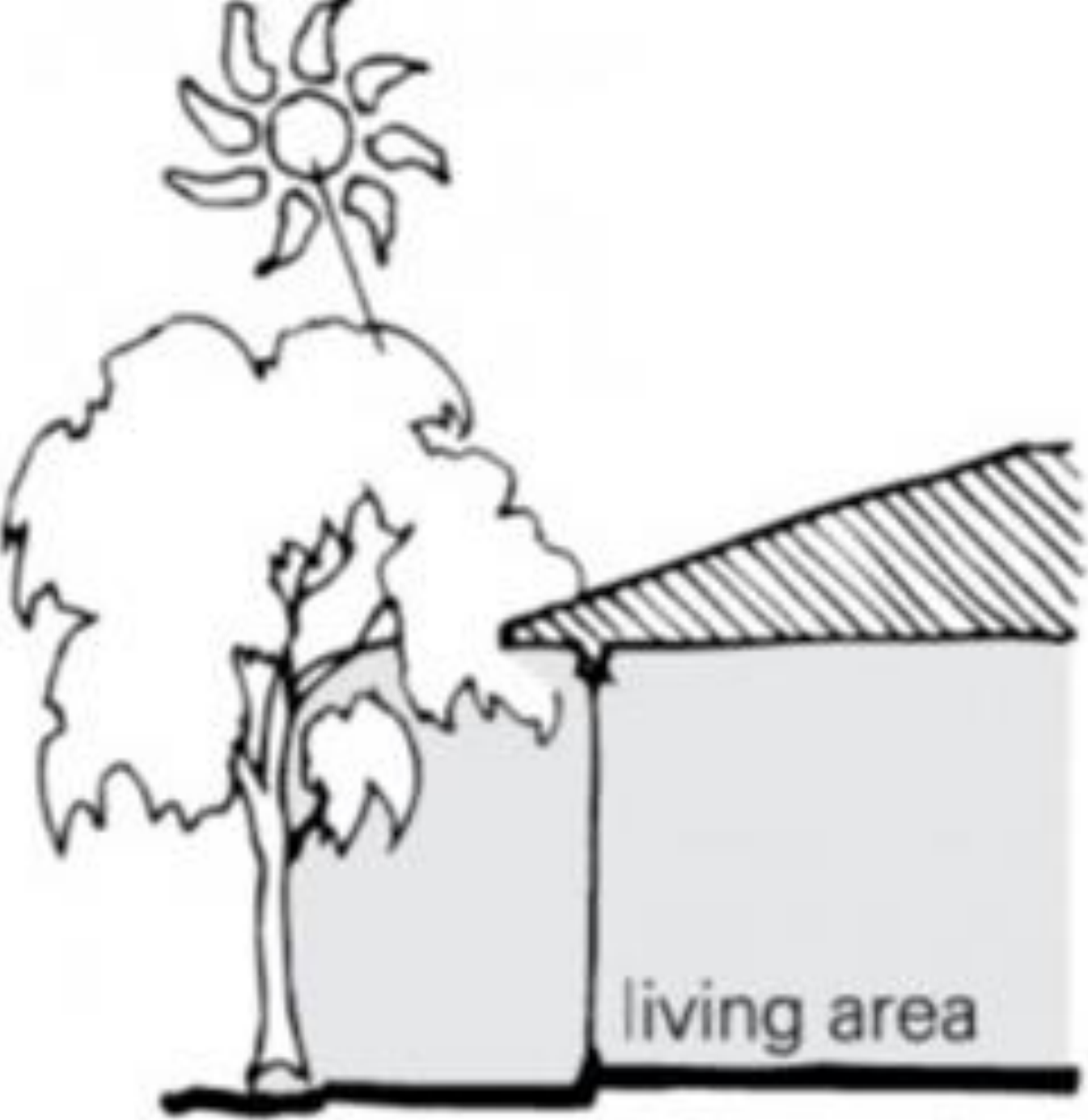
a more connected community



**TREES
IMPROVE OUR
HEALTH &
CREATE
COMMUNITY**



TREES CUT ENERGY COSTS



**TREES
INCREASE
PROPERTY
VALUE & HELP
BUSINESSES**





WHAT YOU CAN DO!

01

Plant trees near buildings to improve stormwater capacity.

02

Plant nut or fruit bearing trees to produce food.

03

Plant trees to create cool, shaded areas.

WHAT CITY COUNCIL AND STAFF CAN DO

01

Create a tree preservation ordinance to create more shade.

02

**Replant tree loss to help reduce the heat island effect.

03

Plant multiple climate adapted trees to increase biodiversity.



VOUCHER PROCESS



Participating Nurseries



**2677 Hales Mill Road,
Asbury, IA 52002**



**3350 John F Kennedy
Road, Dubuque, IA,
52002**



**4101 Pennsylvania
Ave., Dubuque, IA
52002**

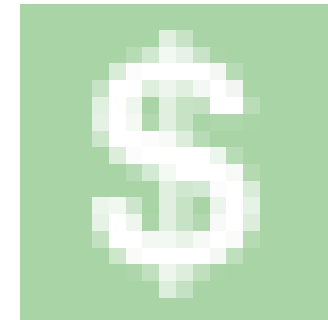


EXCLUSIONS



TREE TYPES

Prohibited trees



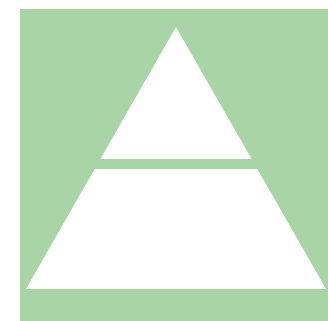
FUNDS

Clarifications



VALID

Sept. 1, 2023- Nov. 1, 2023



VOUCHER TIERS

\$75

\$125

\$250

VOUCHER PROCESS



01 . . . 02 . . . 03 . . . 04 . . . 05

Attend an info
session

Receive a
voucher

Redeem your
voucher at one
of the eligible
nurseries

Plant your tree

Enjoy your
new tree!

** delivery and planting help

Tree Sustainability and the Depletion of a Precious Natural Resource – Our Urban Trees

DUBUQUE



TREES FOREVER
Planting a better tomorrow™

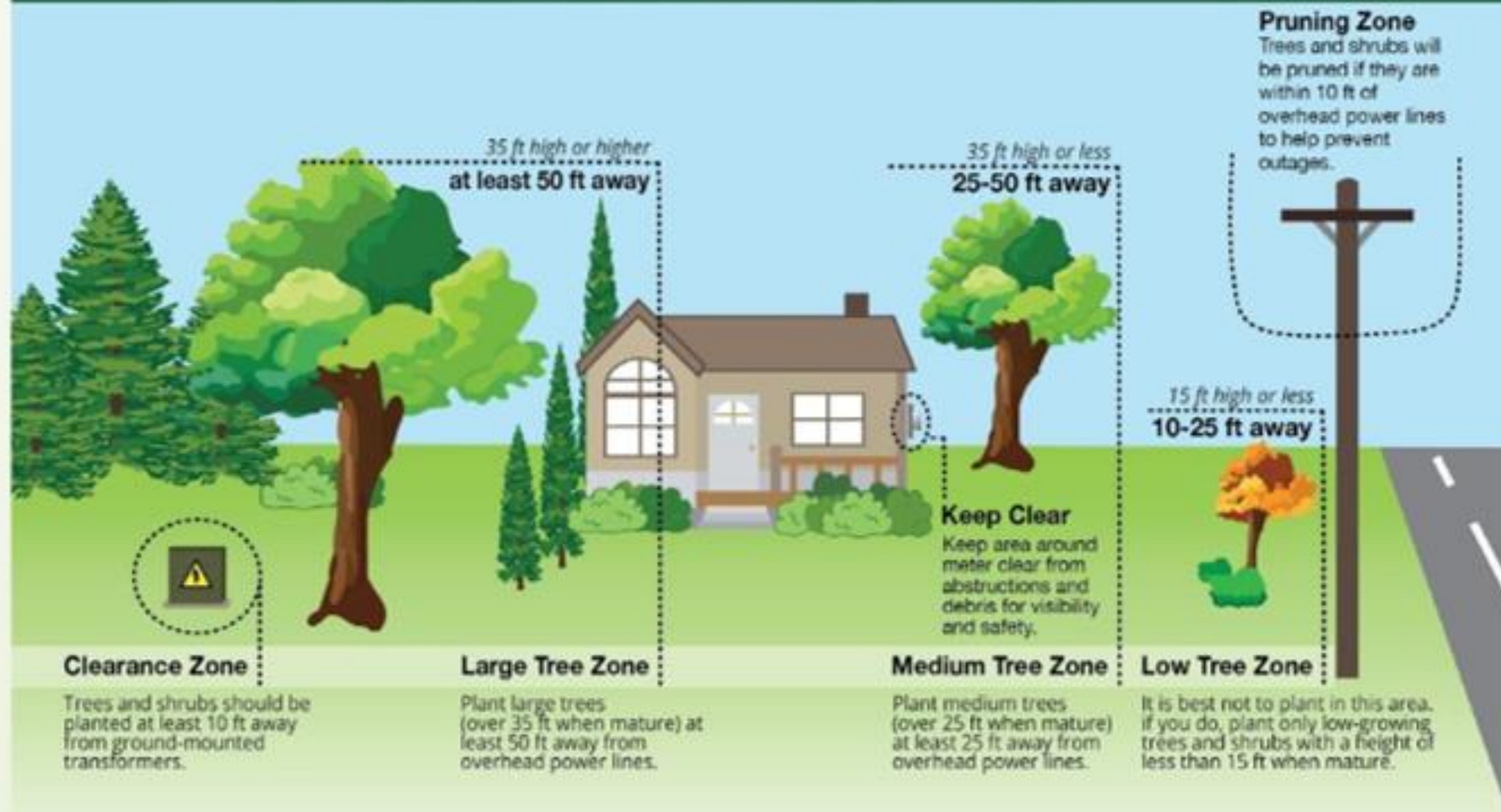


SUSTAINABLE
DUBUQUE
viable • livable • equitable

Tree Selection and Planting


RIGHT TREE, RIGHT PLACE!

Before planting new trees to improve the look of your yard, you will need to keep a few things in mind.

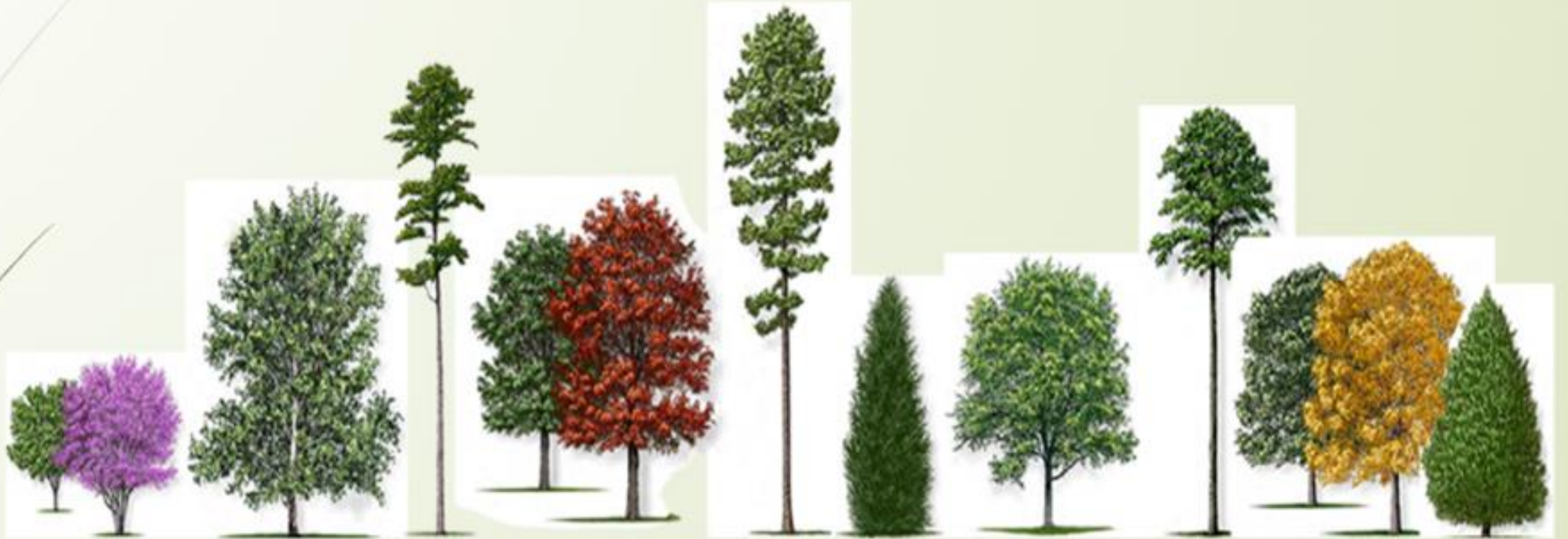




Locating a planting site

- **Adequate space to grow**
 - **Meets plants cultural needs**
 - **Serves your purpose**
 - **Away from obstacles & infrastructure**
- 

Tree Shapes and Sizes



Select your tree wisely!

The wrong tree in the wrong location can become a challenge and maintenance headache.



Consider Trees Cultural Conditions



What to look for in nursery stock

- **Vigorous Plant**
- **Healthy Foliage**
- **Branch Spacing**
- **Trunk Taper**
- **Solid Root Ball – Healthy roots**
- **Abundant Non-circling Roots**





**Think
it's not
that
deep?**

Think again. 40% of active diggers don't contact 811 before digging because they think their project is too shallow to require it.


The truth is, utilities can be buried just inches below the surface. The only way to know for sure is to contact 811 before ANY digging project. Contact 811 before you dig.

811beforeyoudig.com





Prepare the root ball

- **Remove excess soil above root flare**
 - **Remove tree from pot**
 - **Deal with circling roots**
- 

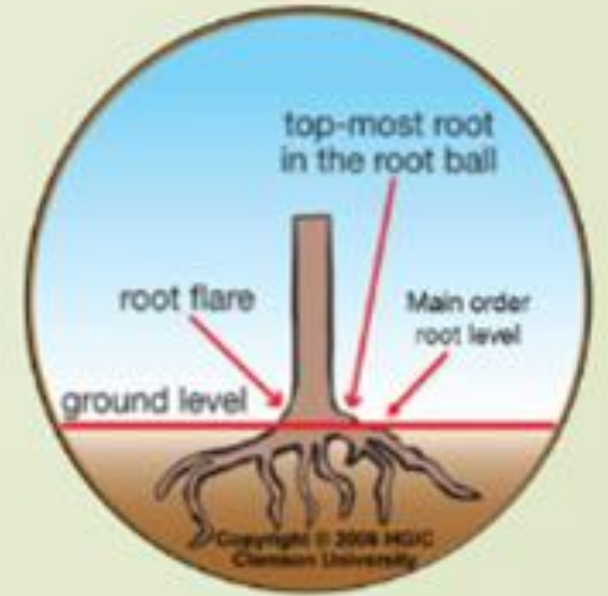




Stem girdling roots



Dig your planting hole – Set the tree



Finishing up

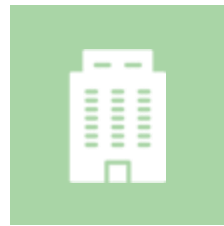
- Backfill
- Water
- Mulch



Staking and Wrapping



CONTACT US



50 West 13th Street, DBQ, IA 52001



**Gina: gbell@cityofdubuque.org
Amanda: alewis@cityofdubuque.org**



**G: (563) 690-6038
A: (563) 690-6038**



**[www.sustainabledubuque.org/
tree-voucher](http://www.sustainabledubuque.org/tree-voucher)**



@Sustainable Dubuque



**SUSTAINABLE
DUBUQUE**
viable • livable • equitable

QUESTIONS?

